



**HUI HO'OMALU  
STATEWIDE  
RESOURCE  
ADVISORY  
COMMITTEE**

**Inside this issue:**

'Ohana Connections Corner	2
Happy Anniversary	2
Hawai'i Job Corps for Youth	3
Mama Kazama's Mantra Moments	3
Care to Share	4
Caterpillar Kids	4
Resource Families Needed: Parent to Parent Mentoring	5
W. Hawai'i's 2nd Annual Resource Family Luncheon	5
HAPA Conference Flyer	6
Make the Most of Your Money: Tips on Saving	7
Resource Family Annual Questionnaire	8
Outstanding DHS Workers	8
Calendar of Events	9

# Building Connections

## A Newsletter for Resource Families



Volume 2, Issue 3

July 2009

### 'OHANA CONNECTIONS CORNER

*For this 'Ohana Connections Corner I helped Marie Bartlett write the piece below. Her story is touching, but also not that unusual. Often families, especially geographically distant families, lose touch with their child relatives in foster care if efforts aren't made to keep them in the loop. I believe her story tells us why that effort is important.*

*—Wilma Friesema, EPIC 'Ohana Conferencing*

### Family Love

*By Marie Bartlett*

My son, Joe, was only 32 years old when he tragically died in a car accident in Hilo on July 23rd, 1998. Our family was shocked and grief stricken by the news. I was living on the mainland at the time, having returned from the Big Island after residing there for three years.

Joe was the father of five young children. I saw the children at the funeral, but they continued living with their mother after his death. I did my best to stay in touch with my grandchildren through phone calls, letters, and packages, but their mom and her family weren't keen on my involvement. I learned, later, their mom lost custody and another maternal family member took the children in. I continued to call and send gifts, but the phone was often busy, then it was dead. I never received anything back from my mailings. I contacted Child Protective Services, but they couldn't give me any information on the children's whereabouts.\*

For ten years I thought of the children every day, though I tried to clear my mind of worry by telling myself they were alright. There was nothing I could do, I knew of no person or service that I could turn to for help. I just prayed that I would see them again before I died.

When Wilma, from EPIC 'Ohana Conferencing, called last December and said she was contacting me on behalf of my grandchildren, the first thing that came out of my mouth was, "Are they all right?" The last time I received such an out-of-the-blue call was when Joe died. Wilma reassured me the children were fine, she was just calling with the hope of reestablishing family connections. I couldn't believe it. I was so overwhelmed I almost broke down and cried with happiness. She kept talking, but I couldn't fully hear what she was saying. The children, they were alright, and I was going to have contact with them! After she hung up I did cry. I couldn't believe it was real.

"I found Joe's kids!" I told my daughter, Debbie, over the phone once I had composed myself. "You what? Are you OK, Mom?" she asked, clearly thinking I had gone off the deep end. She knew how I longed to have contact with the grandkids. I explained Wilma's call and she couldn't believe it either; we were both completely excited and in awe.



*\*Hawai'i Administrative Rule was revised in December 2004 as 17-1601 Confidentiality by Director Koller to allow Child Welfare Services to share information with relatives as appropriate.*

*Continued on Page 2*



## Hawai'i Job Corps for Youth

I work at Hawaii Job Corps and it is a wonderful program for youth, 16-24 years of age, who need academic and vocational skills training. They can get their High School diploma or GED here, and also take up a vocational trade. Our trades are: Automotive Repair, Finance/Business, Culinary Arts, Facility Maintenance, Health Occupations, Landscaping, and Painting. Everything is FREE! You can stay on campus or be a non-resident. We also have transportation available for non-residents. Have any questions? Call Ben at 808-259-6005. ~Heidi

### Mama Kazama's Mantra Moments...

*By Lynne Kazama,  
DHS Program Development Staff*



SUMMERTIME  
SHAKA MAMA KAZAMA



#### As stated by a CWS partner---Imua! Go forth/forward!

Despite the hard economic times, the Department of Human Services--Child Welfare Services Branch and collaborations with the community, providers, stakeholders, cultural advocates, other government entities, etc. ---have been able to improve and enhance our care to mālama the 'ohana, keiki and communities. Our Federal Child and Family Service Review (CFSR) in June 2009 gave very positive preliminary review results, as well as areas to continue to work on. It highlighted the Administration's Leadership and garnering of tremendous resources, Quality Assurance System, Differential Response System, Drug Court, 'Ohana Conferencing and Youth Circles, work with Family/Relative Searches and Placement & Connections, the enhanced recruitment/training/licensing/retention for Resource Caregivers which includes targeted efforts & collaboration with the Native Hawaiian communities, etc.

### Advertise in the Newsletter—Promote Your Business

*100% of the proceeds will be used towards supporting our foster/resource families*

**Display advertisements with borders:** business card size = \$30; 1/4 page = \$50; 1/2 page = \$75; full page = \$115.

Send information to: Hui Ho'omalū—RAC, 680 Iwilei Rd., Ste. 500, Honolulu, HI 96817

Phone: 441-1125 (O'ahu); 888-879-8970 (Toll Free); Fax: 441-1122; E-mail: RAC@pidfoundation.org

Hui Ho'omalū RAC reserves the right to accept, reject or edit advertisements, articles and notices of events based on publication schedule, space limitations, and appropriateness.



# Care to Share

A statewide project of



FAMILY PROGRAMS HAWAII

Resource Families Support Services



“Care to Share” is a way for people to share their gently used items with resource families (foster, adoptive, or guardianship) who need your support.

**Do you have something that a family could use? Do you care to share?** You have a great opportunity to help children in foster care and their generous resource families.

Examples of items requested include: dressers, bunk beds, luggage with wheels, baby gates, basketball hoop, high chair, and smoke detectors.



Examples of items currently available include: children’s toys, Cinderella suitcase, children’s books, baby walker, toddler potty, and infant/children’s clothing in specific sizes

For an up-to-date list of items by island, check out Care to Share at [www.FamilyProgramsHawaii.org](http://www.FamilyProgramsHawaii.org), under “Resources”

**For information, contact the Warm Line:  
545-1130 (O’ahu), 1-866-545-0882 (Toll-free for Neighbor Islands)  
E-mail: WarmLine@FamilyProgramsHi.org**

## caterpillar kids

40% discounts to current Resource Caregivers!

Caterpillar Kids, a store for new and gently used children’s items, has agreed to give all current resource caregivers a 40% discount on all items in their store! The first time they shop, resource caregivers will need to show their foster home license/certificate, and then they will be registered. This is for those who are current resource caregivers, not adoptive or guardianship, and can be used for their biological children as well as those in their care.



**PEARL HIGHLANDS CENTER**  
1000 Kamehameha Hwy.  
Pearl City, HI 96782  
(Above Sam’s Club near Ross)

**STORE HOURS:**  
Monday-Friday: 10am - 7pm  
Saturday: 10am - 8pm  
Sunday: 10am - 5pm  
Phone: (808) 456-1515



## Resource Families Needed for Parent to Parent Mentoring Program

*By Michelle Sajona, Parent to Parent Mentoring Program Coordinator  
Resource Families Support Services, Family Programs Hawai'i*

Resource Family Support Services is looking for resource families to participate in Parent to Parent Mentoring, a DHS funded project on O'ahu.

If you are a new foster, adoptive, guardianship, or kinship parent, join the Parent to Parent Mentoring Program! You will be matched with a seasoned resource parent who can provide you with encouragement, guidance, and moral support as you grow in *your* role as a resource parent.



Parent to Parent Mentoring is also looking for experienced resource parents that would like to mentor new resource parents. Mentors must have a minimum of three years experience as a licensed DHS foster home and be willing to complete an interview and orientation.

There are family-focused events throughout the year, providing opportunities to interact with other families. Our families benefit greatly from the additional support they receive from this program.

Please contact Michelle Sajona, Parent to Parent Mentoring Program Coordinator at 521-9531 ext. 247 for more information.

## West Hawai'i's 2nd Annual Resource Family Appreciation Luncheon

*By Linda Case, Hui Ho'omalua W. Hawai'i Community Liaison*

On Saturday, May 16th from 11:30 am—3:00 pm, West Hawai'i Resource families attended an Appreciation Luncheon at the Hale Halewai Pavilion in Kailua-Kona. This family event was in recognition of National Foster Care Month. The 2nd Annual Resource Family Appreciation Luncheon's theme was "Bridging the Gap and Working Together to Build Healthy Families". The guest speaker was Wally Lau, West Hawai'i Deputy Mayor. He spoke on the importance of communities and families working together for the well-being of our future leaders, and thanked our families for their commitment to foster care. Judith Radwick from the Department of Education thanked all the resource families on behalf of DOE for their efforts in working with the children in our public schools system. David Louis from Heart Gallery Hawai'i spoke from the heart as a previous foster child, thanking all the parents. Then, there was Arnie the magician who was amazing with his magic tricks and entertained with laughter and surprises. Finally, the West Hawai'i Dance Academy was on stage with hula dancers, hip hop dancers and ballet dancers, each dancing with grace and style. Each family that attended received a family photo in a personal jacket signed by Mayor Billy Kenoi. Every child received a bag of gifts and prizes. The funds for the event were donated by the Hawai'i County Council with many thanks to Steve Lopez who emceed the event.

Mahalo to the following establishments for their generous donations used as drawing prizes:

Air Liquide	Keahou Circus Shops US
ATV Outfitters Hawai'i	King Kamehameha Kona Beach Hotel
Blue Hawaiian Helicopters	KTA Superstores
Body Glove Cruises	Starbucks Coffee
Choice Mart	Waikoloa Beach Marriott Resort & Spa
Huggo's Restaurant	Yoganics Hawai'i

This event was a collaborative effort by Hui Ho'omalua, Catholic Charities Hawai'i, Family Programs Hawai'i, the Department of Human Services, Heart Gallery Hawai'i and Project Visitation.



# SAVE THE DATE

## STRESS, BURNOUT AND BOUNCING BACK IN ADOPTION AND PERMANENCY

*For Resource Families  
Adoptive Parents  
And Professionals*



**SATURDAY, NOVEMBER 7, 2009  
8:30 a.m. – 2:30 p.m.**

**Kalihi Union Church  
2214 N. King Street, Honolulu, HI 96819**

**Registration to start in September 2009  
Sponsored by [Hawaii Adoption Permanency Alliance](#)  
Questions: 535-0110 or [hapagrouphawaii@gmail.com](mailto:hapagrouphawaii@gmail.com)**

# Make the Most of Your Money: Tips on Saving

by Catherine Sato, Vice President & Kailua Branch Manager, Bank of Hawai'i

*Courtesy of Bank of Hawaii Smart Money Seminars  
A Financial Education Series*

Financial planning is a process of setting goals, developing a plan to achieve them, and putting the plan into action. It's creating a roadmap for handling everything you do with your money—spending, saving, using credit, and investing. People who are good at making and following a financial plan are able to live comfortably and buy nice things without guilt or stress.

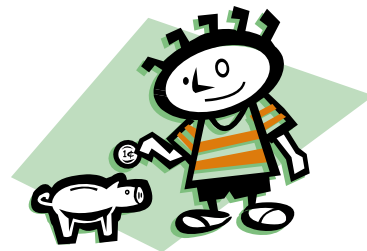


## What are your financial goals?

*Are they short-term, intermediate or long-term goals?*

*Examples:*

- Buy a car
- Take your children on a vacation
- Buy a condo
- Save for retirement



## Saving is an all-important part of reaching your financial goals.

- The secret to doing this is called **"Pay Yourself First."**
- Paying yourself first helps ensure that you're able to pay for the things that are really important.
- Basically, whenever you receive money, you should immediately put a certain amount into a separate account to meet a long-term financial goal.
- You will always have to make tough choices about how you spend your money. But having a savings account in your budget makes it more likely that you'll reach your short-term and long-term goals because you're consistently saving for them.
- When you pay yourself first, you don't even miss the money, because it's like you never had it in the first place.
- The easiest way to save automatically is to ask if your employer would electronically deposit your paycheck for you. Or, set up a monthly automatic transfer from your checking to your savings account. It doesn't take much to start, and as you'll see, your money starts to add up quickly. You can start by setting aside \$5 or \$10 a paycheck, then increase the amount as you feel comfortable.

When it comes to money, you have a lot of choices. Life is a lot easier, though, if you handle your money wisely and save.

For more information or to attend a FREE Bank of Hawai'i Smart Money Seminar, go to [www.boh.com/seminars](http://www.boh.com/seminars) or call 1-888-643-3888, press zero and ask for Bank of Hawai'i Smart Money Seminars.

## Help! Looking For Stories!

Would you like to share some helpful tips? Got an inspirational story to tell? Know of some useful resources in your community?

These are just some of the many possibilities that you can contribute to this newsletter. Please send them over so we can all benefit from each other's wisdom!

## Suggestions? Feedback?

We would appreciate any feedback, comments and suggestions on ways that we can improve this newsletter so that it is useful to you. What would you like to see in it? Topics of interest?

We look forward to hearing from you!

# Your Participation is Valuable!



*Hui Ho'omalua*  
A Program of Partners in Development

We need your help in completing our Annual Questionnaire for Resource Families 2009 to give us feedback on the services you received!



If you are a licensed Resource Family, please help us by completing our survey. Participating in this activity will benefit the State's Child Welfare System as we continuously strive to improve services for Resource Families statewide.

If you haven't received a survey in the mail, please contact: Jason Badua, Quality Assurance & Improvement Specialist at: (808) 441-1126.

## Survey Also Available Online!



If you prefer to complete the survey online, visit the Partners in Development Foundation website at: <http://www.pidfoundation.org/> and click on the Resource Family Annual Survey 2009 icon, which will then link you to the survey. When prompted, enter the password: **hui**

### OUTSTANDING DHS WORKERS!

**Maria Jeminez** is the social worker for my foster daughter. She is always accessible and goes the distance for kids in permanent care; her heart is there. She is always available to give a hug... a big heart is connected to Maria.

Wainani Lee

I Believe that **Ed Harris** should be acknowledged! He is a wonderful, caring and loving worker. Ed will go over and beyond to help all families involved. I enjoy helping him with his cases!

Emily Ascino

### MAHALO TO...

Do you know a DHS-CWS worker(s) that you would like to acknowledge for his/her exceptional work?

Share their name(s) with us and what makes them so special so we can let others know how wonderful they are!

Thank them today!

441-1125 (O'ahu)  
1-888-879-8970 (Toll Free)  
RAC@pidfoundation.org

## CALENDAR OF EVENTS

**AUGUST:**

- 8 East Hawai'i Resource Family Support Group. 12 pm—2:30 pm. Church of the Holy Cross. RSVP to Family Programs Hawai'i (FPH) by Aug 3 at 835-2876 ext. 235.
- 12 West Hawai'i Resource Family Support Group. 5:30 pm—8:00 pm. Queen Lili'uokalani Children's Center. RSVP to FPH's Warm-line: 1-866-545-0882 (Toll Free).
- 14 Waianae Resource Family Support Group. 5:30 pm—8 pm. Waianae District Park. RSVP to FPH by Aug 10 at 521-9531 ext. 245.
- 14 Windward Resource Family Support Group. 6 pm—8:30 pm. Faith Baptist Church. RSVP to FPH by Aug 10 at 521-9531 ext. 245.
- 19 Halawa Training: "No I Won't and You Can't Make Me!" Effectively Handling Power Struggles. 5:30 pm—8 pm. Halawa District Park. (See below for more info).
- 20 Maui Resource Family Support Group. 5:30 pm—8 pm. Queen Lili'uokalani Children's Center. RSVP to Kim Bowlin by Aug 17 at (808) 250-4457.
- 26 Hilo Training: "No I Won't and You Can't Make Me!" Effectively Handling Power Struggles. 5:30 pm—8 pm. Church of the Holy Cross. (See below for more info)
- 28 Halawa Resource Family Support Group. 5:30 pm—8 pm. Halawa District Park. RSVP to Family Program Hawai'i by Aug 24 at 521-9531 ext. 245.

**SEPTEMBER:**

- 2 Kua'i Training: "No I Won't and You Can't Make Me!" Effectively Handling Power Struggles. 5:30 pm—8 pm. Lihu'e Lutheran Church (See below for more info)
- 4 Waianae Training: "No I Won't and You Can't Make Me!" Effectively Handling Power Struggles. 5:30 pm—8 pm. Waianae District Park. (See below for more info)
- 9 Maui Training: "No I Won't and You Can't Make Me!" Effectively Handling Power Struggles. 5:30 pm—8 pm. Queen Lili'uokalani Children's Center, Annex Building. (See below for more info)
- 23 Kona Training: "No I Won't and You Can't Make Me!" Effectively Handling Power Struggles. 5:30 pm—8 pm. Queen Lili'uokalani Children's Center. (See below for more info)

**NOVEMBER:**

- 7 "Stress, Burnout and Bouncing Back in Adoption and Permanency Conference". (See page 6 for flyer).

### COMMUNITY INFORMATIONAL MEETINGS

Know anyone who has questions about becoming a resource caregiver?

Want to know more about Kōkua Bucks and how you can earn \$200?



**Come to our Informational Meetings!**

**This is FREE to anyone who is interested!**

Call today to find out when the next meeting is in your area!

O'AHU: Carol at 265-9888

EAST HAWAII: Michele at 987-5988

WEST HAWAII: Linda at 896-3829

MAUI: Ethan at 268-5122

KAUAI Monica at 346-8184



### "No I Won't and You Can't Make Me!" Effectively Handling Power Struggles



Presented by: Jill Rabinov, MA,  
Certified Instructor of RBC Parenting Class

This FREE training will help you to understand your children's needs through their behavior. You will learn how to recognize, prevent, and get out of power struggles with your children.

Dinner will be provided!

Childcare for ages 3-12 will be provided!



See above Calendar of Events for dates & times

For more information or to RSVP,  
contact the Warm Line at  
1-866-545-0882 (Toll Free)  
545-1130 (O'ahu)

Sponsored by the Department of Human Services, Family Programs Hawai'i,  
and Foster Care Training Committee

**HUI HO'OMALU  
STATEWIDE  
RESOURCE  
ADVISORY  
COMMITTEE**

2040 Bachelot St.  
Honolulu, HI 96817-2433  
441-1125 (O'ahu)  
888-879-8970 (Toll Free)  
Fax: 441-1122  
E-mail: RAC@pidfoundation.org

The concept for the Statewide Resource Advisory Committee (RAC) was created by the Department of Human Services (DHS) as a means to support the resource family community. Hui Ho'omalua facilitates this committee comprised of resource parents, resource caregivers and various community agencies, all dedicated to providing services and support to Hawai'i's keiki and the resource families who care for them. The purpose of the RAC is to identify ongoing needs, facilitate communication, share resources, provide information through a statewide calendar of events and a quarterly newsletter and report on local projects and other topics of interest to benefit Hawai'i's resource families.

**RAC Committee Members:**

Catholic Charities Hawai'i—Hui Ho'omalua  
Department of Health  
Department of Human Services  
EPIC, Inc. 'Ohana Conferencing  
Family Court  
Family Programs Hawai'i—Hui Ho'omalua  
Resource Caregivers  
Resource Parents  
Hawai'i Foster Youth Coalition  
Heart Gallery Hawai'i  
HOPE INC  
It Takes An 'Ohana  
Partners in Development Foundation—Hui Ho'omalua & Kōkua 'Ohana  
Queen Lili'uokalani Children's Center  
University of Hawai'i, School of Social Work

NONPROFIT ORG.  
U.S. POSTAGE PAID  
HONOLULU, HI  
PERMIT NO. 1554

PARTNERS IN DEVELOPMENT FOUNDATION  
2040 Bachelot St.  
Honolulu, Hawai'i 96817-2433

